

PHONE REFERRAL LIST

National DV Hotline (24hr) 1-800-799-7233 or
1-800-787-3224 (TTY)

Domestic Violence Hopeline
206-737-0242 or 877-737-0242

Teen Dating DV Hotline (24hr)
1-866-331-9474

Domestic Abuse Women's Network (DAWN)
425-656-7867

LightHouse Northwest
206-824-8581

Des Moines Municipal Court Prosecutor
206-870-6515

Des Moines Police Department
206-878-3301

Victim's Advocate
206-870-6530

JAIL INFORMATION

Maleng Regional Justice Center
(206) 205-2501

**VINE (Victim Information & Notification
Everyday)** 1-877-425-8463

To determine if an offender is in custody at the
King County Jail, or to sign up to be notified
upon an offender's release. Available in other
languages.

**SAVIN (Statewide Automated Victim
Information & Notification)**
www.vinelink.com 1-877-846-3492

To get King County Jail inmate information
online, visit:
<https://ingress.kingcounty.gov/Public/JILS/default.aspx>

LANGUAGE INFORMATION

1 (888) 847-7205

The Peace in the Home Helpline is a
24/7 hotline which connects survivors
to an advocate who speaks their
language with one call.

For additional languages to include: Chinese,
Vietnamese, Thai, Lao, Cambodian, Tagalog,
Japanese, Korean, Russian, Ukrainian,
Romanian, Hindi, Punjabi, Somali, Tigrigna,
Amharic, and Arabic please scan the QR Code
below for information.

Para Español, Escanear Este Código:



FOR EMERGENCY DIAL 911

**DES MOINES POLICE DEPARTMENT
DOMESTIC VIOLENCE INFORMATION
AND RESOURCE GUIDE**

21900 11TH AVE S
DES MOINES, WA, 98198

Revised 11/2023



DES MOINES POLICE DEPARTMENT DOMESTIC VIOLENCE INFORMATION AND RESOURCE GUIDE

CASE # _____

CITATION # _____

OFFICER # _____

FOR EMERGENCY DIAL 911

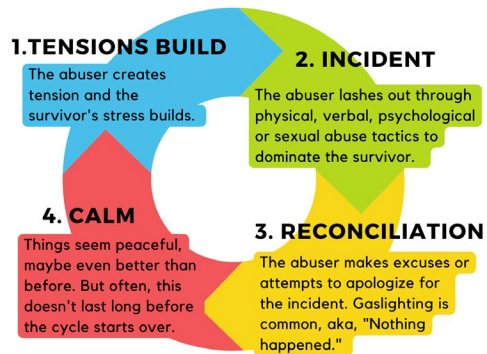
Non-Emergency Dispatch
(206) 878-2121

*For additional resources and information regarding
Domestic Violence please scan the QR Code on the
back of the brochure

WHAT IS DOMESTIC VIOLENCE?

Domestic violence is a pattern of behavior used by an individual to establish and maintain control over another partner/person. Domestic violence consists of physical, sexual, psychological, financial and emotional abuse. Domestic violence is NOT consensual without intervention and counseling, the abusive behavior can increase in frequency and severity. To survive, victims develop coping strategies and survival techniques in an attempt to avoid harm and injury. While victims attempt to alter their behavior to stop the violence, reality is they cannot stop it because they do not cause it. Drugs, alcohol, and/or stress do not cause domestic violence. The abuser may have other issues that may also need to be treated in conjunction with domestic violence counseling such as chemical dependency and/or mental health illness. Did you know that children who grow up in a violent environment carry this behavior belief system into future relationships?

CYCLE OF ABUSE



WHAT IS A DOMESTIC VIOLENCE CRIME?

A DV crime is any crime committed against persons or property of another when there is a unique relationship between the defendant and the victim (i.e. spouse, girlfriend/boyfriend, dating, living together, etc.). **The prosecutor is solely responsible for pressing criminal charges...NOT the victim. The victim CANNOT drop charges.** The City of Des Moines can charge the defendant even though the victim may not want charges to go forward.

WHAT TO EXPECT AT THE FIRST COURT HEARING/ ARRAIGNMENT FOR MISDEMEANOR CASES

An arraignment is the first court hearing after the defendant has been arrested or charged. The defendant will be asked to enter a plea of guilty or not guilty. On a plea of guilty, there is no need for a trial. The defendant may be sentenced and ordered to comply with a number of conditions to include: no contact with the victim, complete domestic violence treatment, drug/alcohol and/or mental health assessment. On a plea of not guilty, the case is set to pretrial and the Judge may impose conditions of release. If you (the victim) do not attend arraignment but want to know the hearing results, contact Victim Assistance. Be aware the Judge can issue a No Contact Order at this hearing (**even if you do not want one**). This order can prohibit the defendant from all contact with the victim and also restrain the defendant from returning to the shared residence. If you do not want a No Contact Order or want exceptions in a No Contact Order please contact Victim Assistance.

WHAT HAPPENS AFTER ARRAIGNMENT?

A pretrial is the next court hearing that occurs after arraignment. If the case is not settled, the case may be set over to other hearings and if a resolution is not reached the case may be set to trial. If you have any questions about the case status please contact Victim Assistance.

PROTECTION ORDERS

There are several different types of protection orders and restraining orders. The type of order that gets issued depends on how individuals may be related to each other and circumstances of the situation. An individual can also have more than one order placed against them. As a victim, it is important to keep a copy of your orders on your person at all times and to know the restraint provisions. Please scan the QR code on the back of the brochure for brief descriptions of the different orders and how they can be obtained.

DES MOINES CITY PROSECUTOR
(206) 870-6515
DES MOINES MUNICIPAL COURT
(206) 878-4597
VICTIM'S ADVOCATE
Misdemeanor (206) 870-6514
Felony (206) 477-3743
RESOURCES
<https://dvhopeline.org/>

HOW DO I FIND OUT WHAT IS HAPPENING WITH A CASE?

If your case is a Felony DV, please call the King County Prosecutor's Domestic Violence Victim Advocate at (206) 205-7411 (RJC) or (206) 296-9470 (Seattle). Otherwise, please contact the Victim Assistance Coordinator (VAC) with the City of Des Moines Prosecutor's Office at (206) 870-6514. The VAC can offer you support, share your feelings/concerns with the prosecutor, assist you with understanding the criminal justice process/procedures, let you know about your rights as a crime victim, assist with safety planning, as well as help keep you updated on the case. You and your concerns are very important and you have a right to know what is happening.

